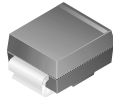
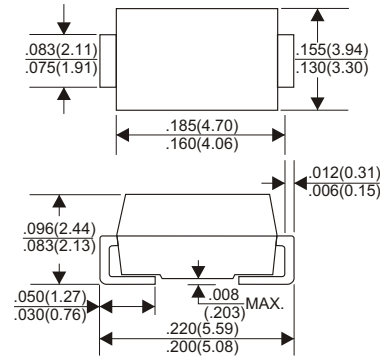


RoHS Compliant Product

A suffix of "-C" specifies halogen-free



DO-214AA(SMB)



Dimensions in inches and (millimeters)

FEATURES

- * Ideal for surface mount applications
- * Easy pick and place
- * Built-in strain relief
- * Fast switching speed

MECHANICAL DATA

- * Case: Molded plastic
- * Epoxy: UL 94V-0 rate flame retardant
- * Metallurgically bonded construction
- * Polarity: Color band denotes cathode end
- * Mounting position: Any
- * Weight: 1.02 grams

MAXIMUM RATINGS AND ELECTRICAL CHARACTERISTICS

Rating 25°C ambient temperature unless otherwise specified.
Single phase half wave, 60Hz, resistive or inductive load.
For capacitive load, derate current by 20%.

TYPE NUMBER	SEF201B	SEF202B	SEF203B	SEF204B	SEF205B	SEF206B	UNITS
Maximum Recurrent Peak Reverse Voltage	50	100	200	400	600	800	V
Maximum RMS Voltage	35	70	140	280	420	560	V
Maximum DC Blocking Voltage	50	100	200	400	600	800	V
Maximum Average Forward Rectified Current							
.375" (9.5mm) Lead Length at Ta=55°C	2.0						A
Peak Forward Surge Current, 8.3 ms single half sine-wave superimposed on rated load (JEDEC method)	50						A
Maximum Instantaneous Forward Voltage at 2.0A	0.98		1.3		1.5	1.7	V
Maximum DC Reverse Current Ta=25°C	5.0						µA
at Rated DC Blocking Voltage Ta=100°C	100						µA
Maximum Reverse Recovery Time (Note 1)	50					70	nS
Typical Junction Capacitance (Note 2)	15						pF
Thermal Resistance, Junction to Lead (Note 3)	18						
Thermal Resistance, Junction to Ambient (Note 3)	55						°C/W
Operating and Storage Temperature Range T _J , T _{STG}	-65 ~ +150						°C

NOTES:

1. Reverse Recovery Time test condition: IF=0.5A, IR=1.0A, IRR=0.25A
2. Measured at 1MHz and applied reverse voltage of 4.0V D.C.
3. Rating applies when surface mounted on the minimum pad size recommended, PC Board with 7.0 X 7.0mm copper pad.

RATING AND CHARACTERISTIC CURVES (SEF201B THRU SEF206B)

FIG.1-TYPICAL FORWARD CHARACTERISTICS

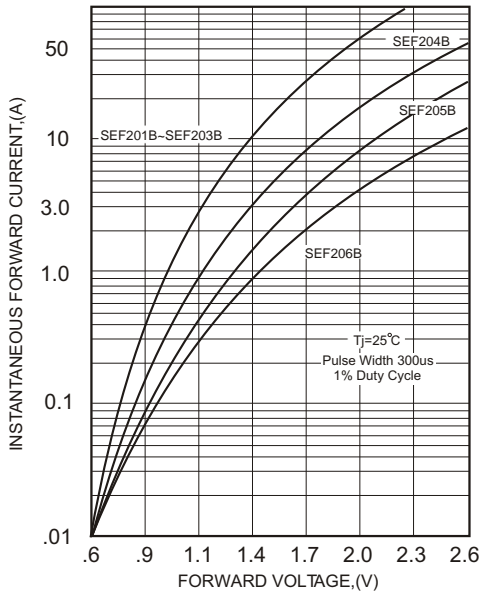


FIG.2-TYPICAL FORWARD CURRENT DERATING CURVE

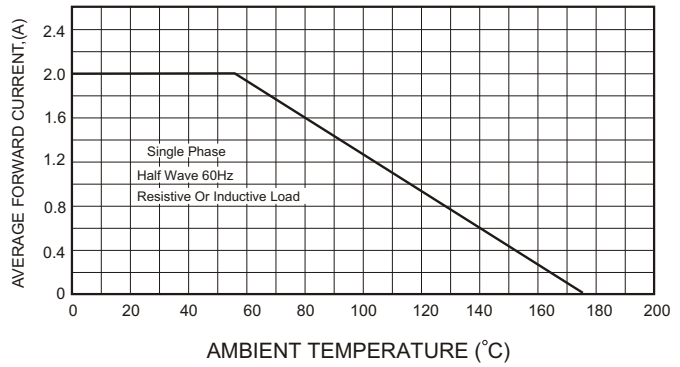
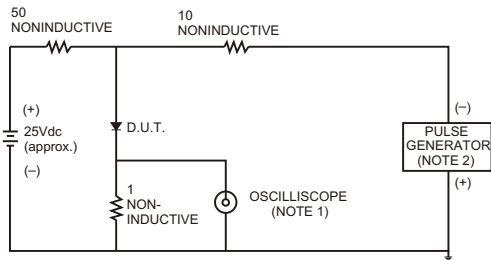


FIG.3- TEST CIRCUIT DIAGRAM AND REVERSE RECOVERY TIME CHARACTERISTICS



NOTES: 1. Rise Time= 7ns max., Input Impedance= 1 megohm.22pF.
2. Rise Time= 10ns max., Source Impedance= 50 ohms.

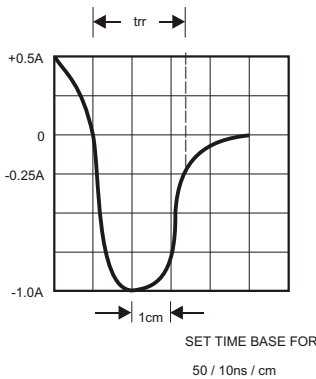


FIG.4-MAXIMUM NON-REPETITIVE FORWARD SURGE CURRENT

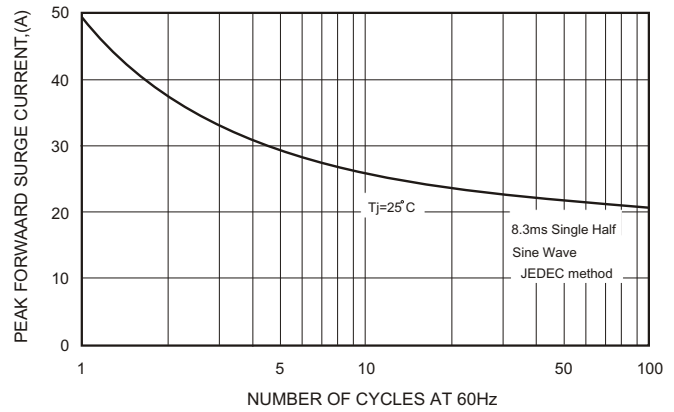


FIG.5-TYPICAL JUNCTION CAPACITANCE

